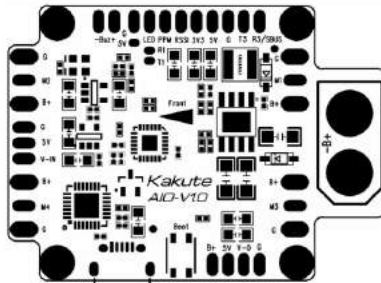




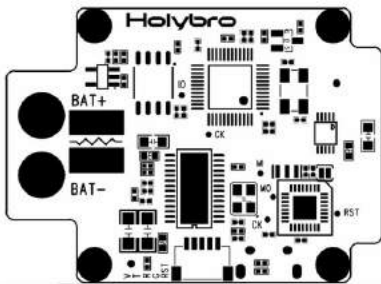
Board Layout

▶ TOP



| Pin | Function |
|------------|---|
| BUZ- | Buzzer- |
| BUZ+ | Buzzer+ |
| G | Ground |
| LED | Digital LED Output |
| 5V | 5V output 800mA |
| R1,T1 | UART1 RX,TX |
| PPM | PPM Output |
| RSSI | RSSI |
| 3V3 | 3.3V output 150mA |
| 5V | 5V output 800mA |
| G | Ground |
| R3/SBUS,T3 | UART3 RX/SBUS or other serial connections, UART3 TX |
| G | Ground |
| M1 | PWM Output (Motor 1) |
| M2 | PWM Output (Motor 2) |
| M3 | PWM Output (Motor 3) |
| M4 | PWM Output (Motor 4) |
| B+ | Battery+ |
| G | Ground |
| V-O | Video Output |
| 5V | 5V output 800mA |
| B+ | Battery+ |
| V-IN | Video Input |
| 5V | 5V output 800mA |
| G | Ground |
| BAT+ | Input voltage 7-42v |

▶ BOTTOM



| Pin | Function/OSD Configuration Port |
|-----|---------------------------------|
| V | 5v-7v Input |
| T | OSD UART TX |
| R | OSD UART RX |
| G | Ground |
| RST | OSD DTR |

Note:

- ▶ UART1 occupied by USB
- ▶ UART2 occupied by OSD
- ▶ UART3 Serial Port Receiver, SBUS, DSMX.. available
- ▶ For MWOSD, remember to change Voltage/ Amperage/RSSI to "Use FC".

Features

- With FC, OSD, PDB all integrated, Kakute AIO makes it simple and convenient to build up your drone.
- Only one VTX module is needed to make a complete set of FPV Racing Drone.
- Minim OSD integrated; MWOSD Firmware preloaded; OSD Config port available; OSD interface highly customizable according to you own needs.
- 2 oz Copper PCB ensures the 120A Maximum Continuous Current.
- Dedicated Boot button for easy firmware flashing.
- Reinforced solder pads for trouble-free direct soldering.
- Extremely low profile design.
- Input voltage 7v to 42v. Power the board directly from flight pack up to 6S (on 'BAT' pad only!).
- PDB Maximum Continuous Current 120A
- VIN + VBAT merged - A single wire to power the board will provide voltage input and Telemetry/OSD voltage data.
- Filtered voltage output - output 5v 800mA (and 3.3v 150mA where applicable) to power peripherals such as GPS, RX, BLACKBOX. 5v/3.3v RX selectable.
- Cleanflight support (RACE target).
- BLHeli flashing supported by hardware
- Raceflight ready
- Betaflight ready



Specifications

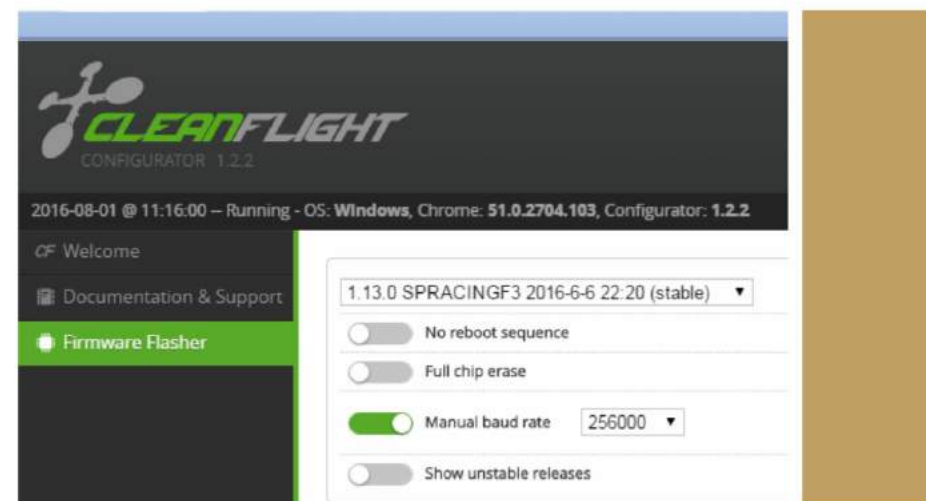
- STM32F303CCT6(256kB flash) 32-bit processor
- MPU6050 Gyro/Accelerometer
- ATmega328P with Arduino Bootloader(minim OSD)
- MAX7456 Monochrome On-Screen Display(minim OSD)
- FTDI Cable Compatible Pinout(minim OSD)
- High quality, gold plated PCB
- Micro USB connector for programming
- Dimensions: 36x47.5x7mm (includes USB in height)
- Mounting Holes: 30.5mm square to center of holes
- Weight: 7g

Package Includes

- 1x Kakute AIO Flight Controller
- 1x Quick Start Guide
- 1x 80mm XT60 connector wire

Software Installation/Setup

- Install latest Silicon Labs CP2102 USB to UART Bridge VCP Drivers
<http://www.silabs.com/products/mcu/pages/usbtouartbridgevcpdrivers.aspx>
- Install and launch the Cleanflight Configurator tool
<https://chrome.google.com/webstore/detail/cleanflight-configurator/enacoimjogeinfnnpajinjgmkahmfgb>
- Connect Kakute AIO to computer via USB cable.
- Select the correct COM port if it is not automatically detected.
- Click connect, verify that communication is established.
How to play:
<http://cleanflight.com/>
<http://www.rcgroups.com/forums/showthread.php?t=2249574>



- Click the Firmware Flasher tab."
- Select the latest SPRacingF3 stable release.
- Set the flashing baud rate to 256000.
- Click 'Load firmware [Online]' and wait for firmware to download and read release notes.
- Click 'Flash Firmware'.

MWOSD Firmware upgrade

<http://www.mwosd.com/>

<https://github.com/ShikOfTheRa/scarab-osd>

Warranty & Return Policies

Technical staff of our after-sales service center will examine the returned product to identify the problem.

In the case of product failure due to defective material or manufacturer workmanship within the 60 days from the date of purchase, the product will be repaired or replaced (decided by the manufacturer) with no charge to the customer, but the customer will pay for the returning shipping costs under all circumstances.

Returned items should include the original packaging and all the accessories.

Refund occurs only when the item is lost by the shipping company.

Maximum refund amount will not be more than the selling price, freight fee will not be returned.

After-sale service email: productservice@hollybro.com